



ARTE

wallcoverings for the ultimate in refinement  
de ultieme verfijning in muurbekleding  
le revêtement mural dans sa quintessence  
Wandbekleidung für raffinierte Eleganz

---

With over thirty five years' experience, Arte is well-known in the world of luxury interiors. Nowadays our sophisticated wallcovering is used all over the world, which is something we are really proud of. Every year we create an exquisite range of new collections which are designed in-house by a team of experienced designers. The emphasis is always on quality and innovation.

[www.arte-international.com](http://www.arte-international.com)

## Artisan

---

This collection is an ode to high-quality, traditional craftsmanship. The wallcovering is made of pure, natural materials, from minerals and grasses to tropical plants. Experienced artisans pleat, weave and dye with boundless passion and patience. They turn these materials by hand into beautiful, unique wallcoverings.



Fraction # 40360





Fraction # 40362



Shimmer # 40352



Artisan





Twill # 40332





## Atelier

---

The true craftsman elevates the working of leather to a noble art. With great love for the material, he creates new designs each time. His creations radiate luxury and warmth and they gain an increasingly beautiful patina over the years. They are absolute essentials in couture, fashion and high-end interiors. The Atelier collection is an ode to this craftsmanship.

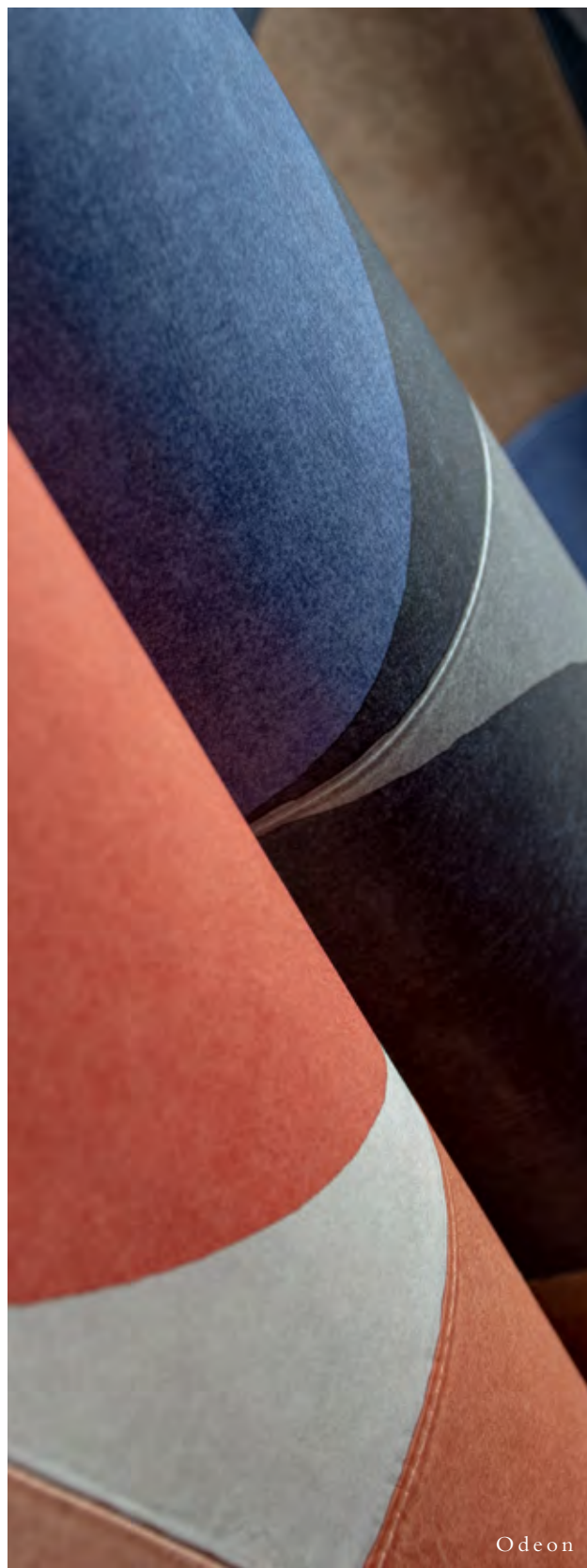


Campo # 21040









Odeon



Odeon # 21030



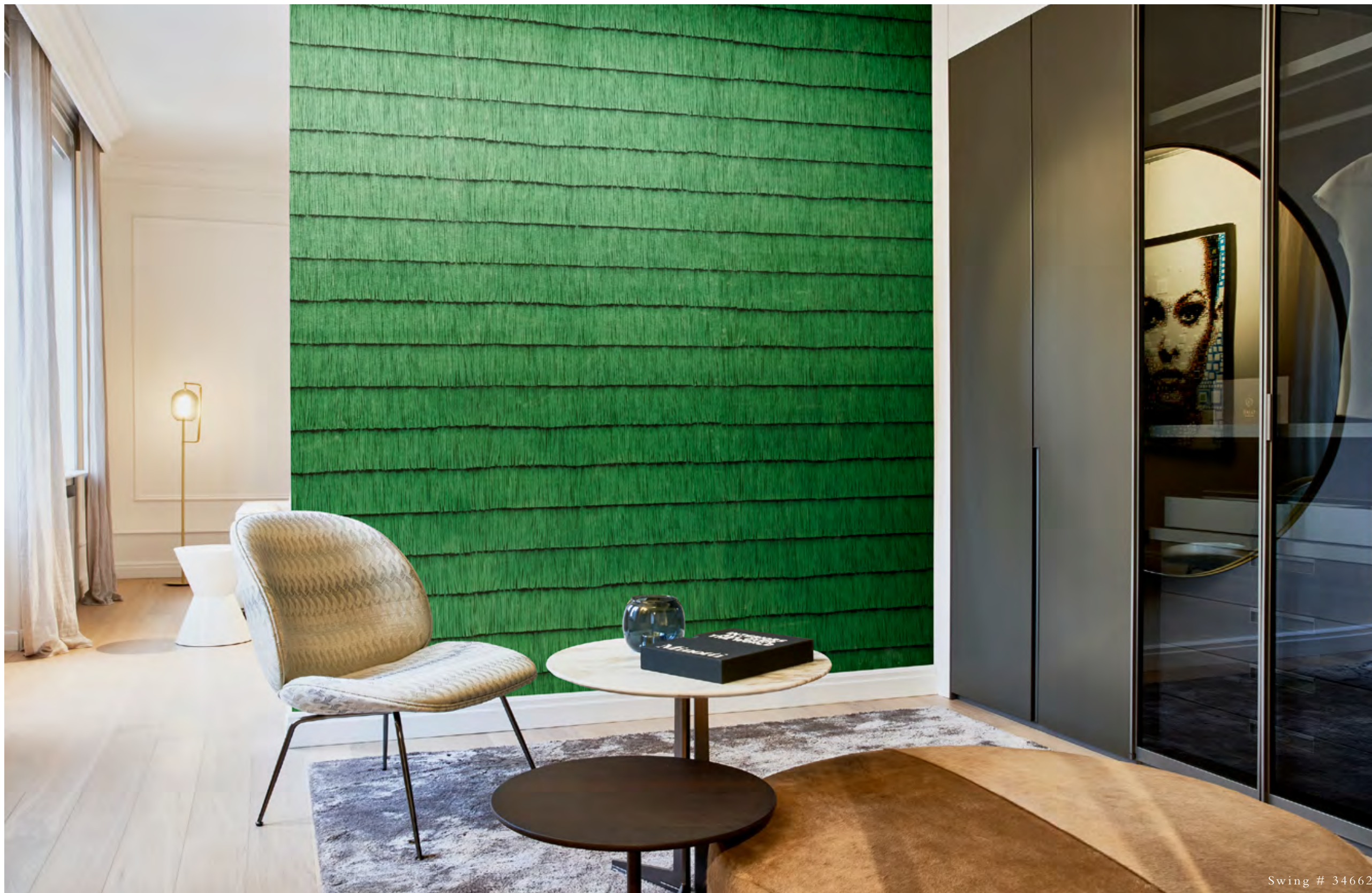
## Insolence

---

The Roaring Twenties will forever be known for the rise of cinema and jazz music. Fashion is provocative and interiors more opulent than ever before. Fast-forward to the present day, where the luxurious new palazzo style is an unstoppable trend. We see many typical Twenties elements making a comeback, although in contemporary form. That combination of new palazzo and Twenties style forms the inspiration for this collection.







Swing # 34662



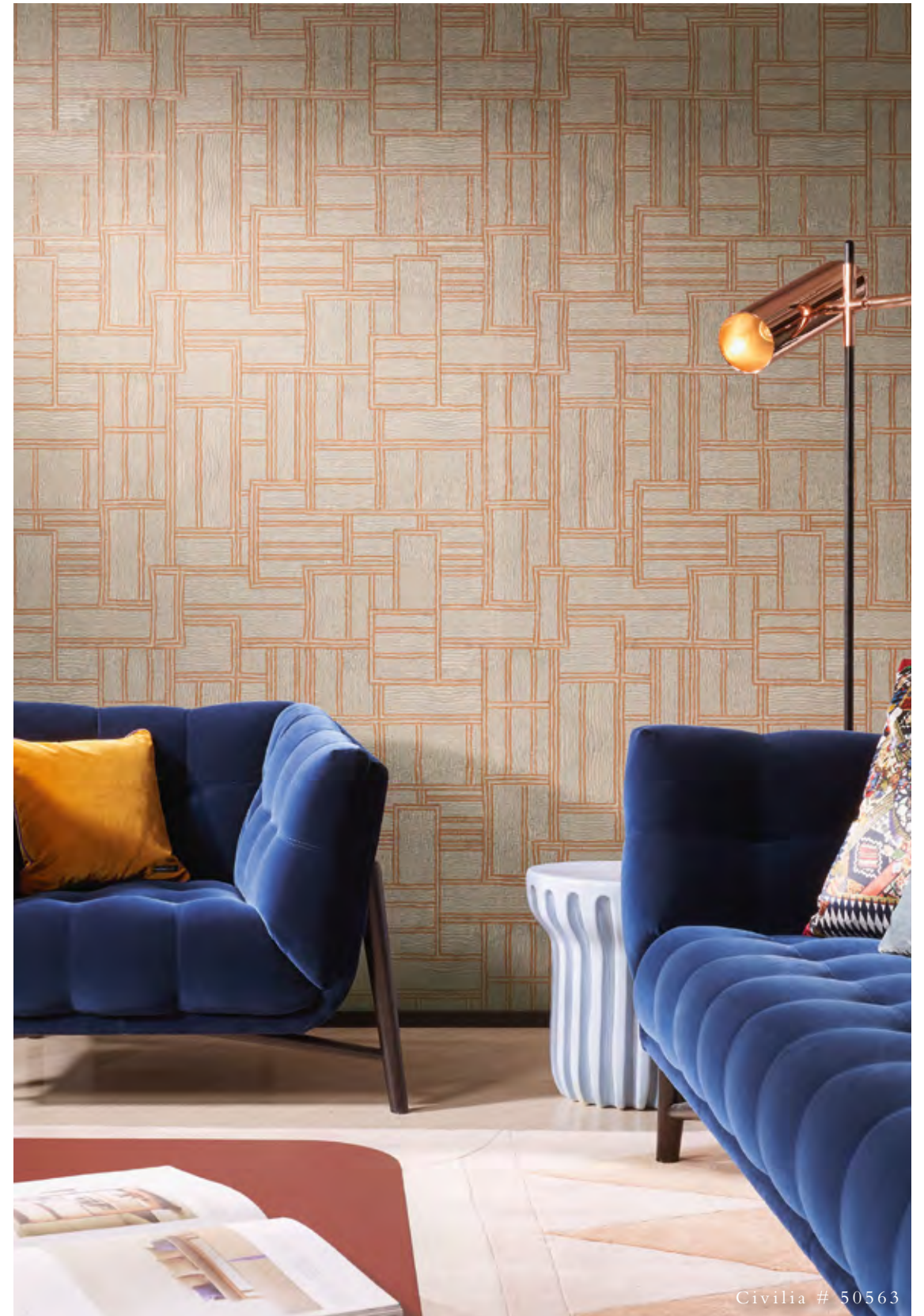




## Paleo

---

Paleo, a glimpse of 'native America'. The Paleo Indians, the oldest native inhabitants of North America, had a colourful lifestyle and fascinating culture. The drawings and colour palette in this collection take their inspiration from the way clothes, jewellery and utensils used by this nomadic tribe were decorated. Paleo means 'the ancient', yet these unusual motifs are more up to date than ever.



Civilia # 50563





Strata # 50570

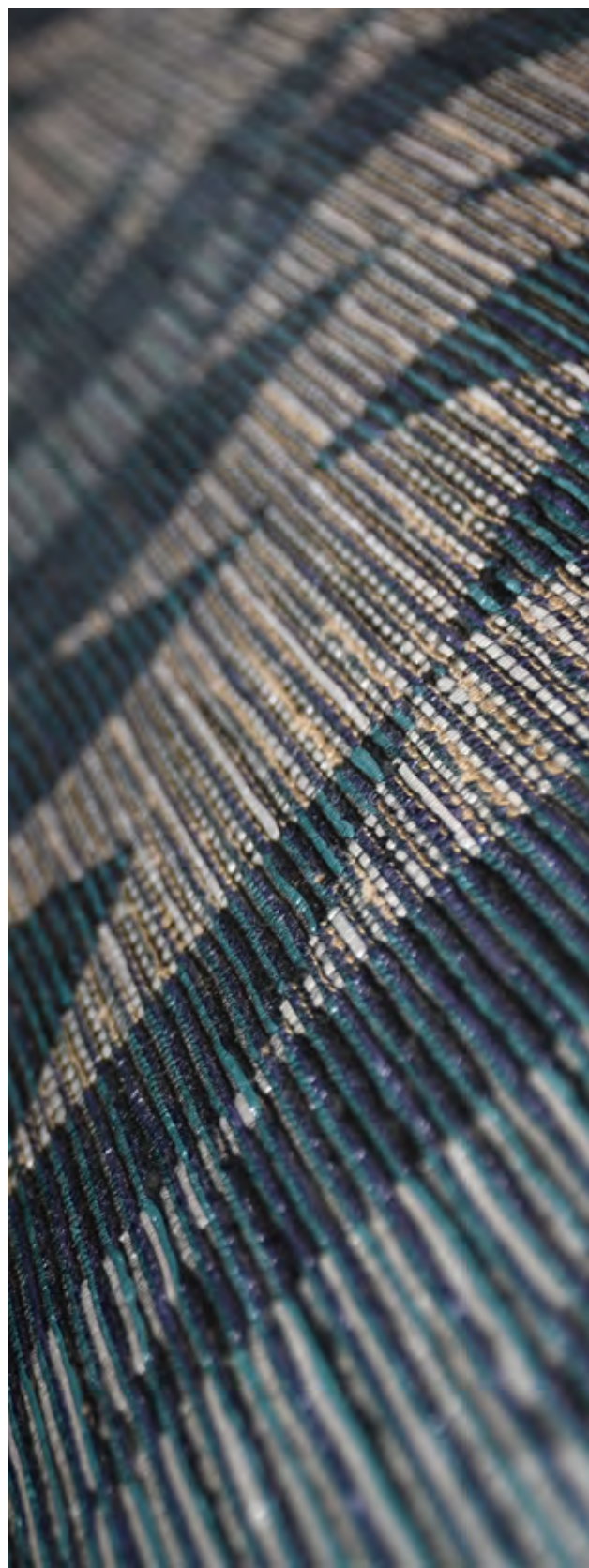


Paleo

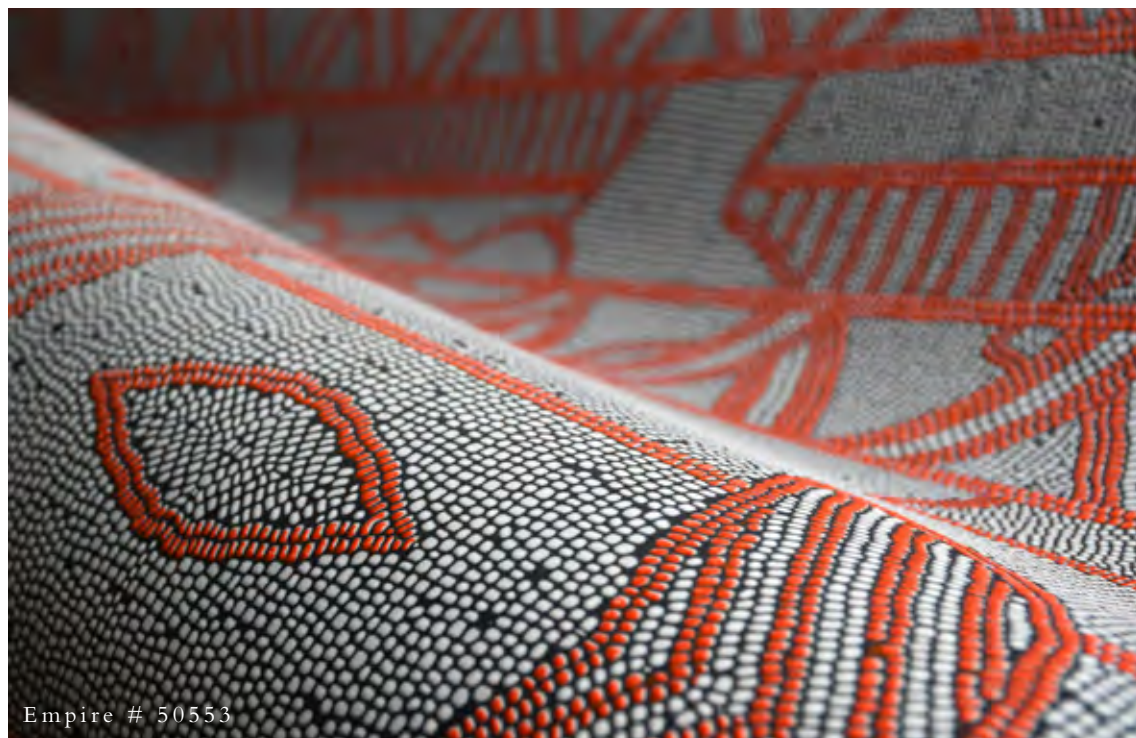




Copán # 50540







Empire # 50553



Latus # 50509



Empire # 50550



## Cantala

---

This collection honours the pure beauty of natural materials like sisal, raffia and paper. The authentic, graceful look of these products is the key feature. The collection owes its name to the Agave cantala, an exotic plant of the Agave family. Sisal fibres are derived from its long, slender leaves which are often up to two metres long. We often see this sisal used in fashion and interior design.

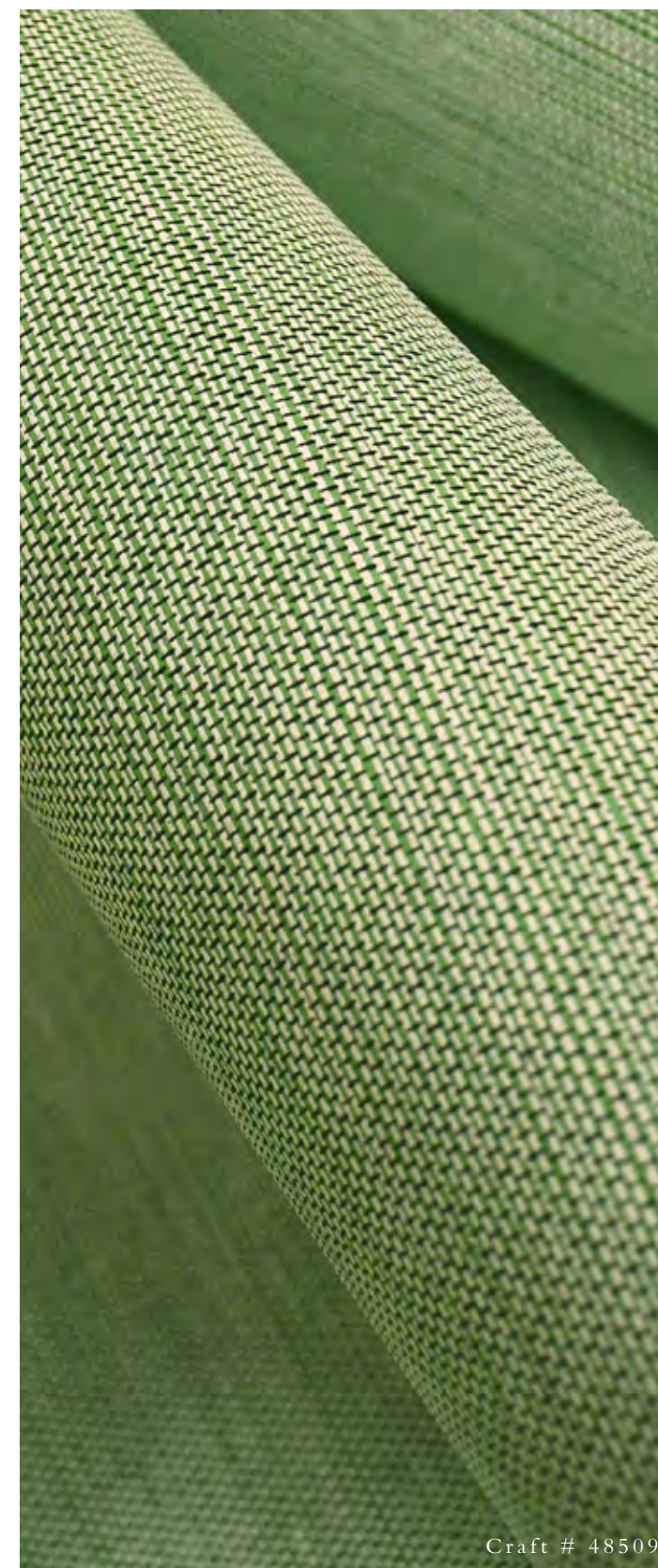


Combo # 48534





String # 48540



Craft # 48509





Raphia # 48560



Papyrus # 48552



# Lino

---

Linen has been a highly valued element in our interiors for centuries. It is a timeless classic and has a natural aspect with an irregular structure. This can be very outspoken or rather subtle, depending on the yarn. This typical, unique texture is what makes linen so charismatic. The Lino collection combines the timelessness of various linen textures with the durability of vinyl wallpaper.



Aspero # 40546





Aspero # 40540



Lignes # 40509







## Vanguard

---

A combination of avant-garde textiles and elegant, pleated wallcovering. Abstract graphic patterns, playful and expressive colours, and a luxurious touch, all inspired by 'modern painting'. A hint of Italian with a dash of vintage. The choice of materials is unique and contemporary. Matte or glossy. Experimental and technical. Added value in both look and feel.



Expressionist # 93600













Expressionist # 93601



Expressionist # 93601



Mira # 93502



## Timber

---

**W**ood: an authentic, sophisticated and sustainable material. Its beauty lies in its simplicity and pure nature. With visible grains and traces of knots. The wallcovering in the Timber collection is made exclusively of Paulownia wood that has been processed with care and craftsmanship. Inlaid geometric patterns produce surprising optical effects. A natural product that derives its exclusivity from its pureness.



Elements # 38240





Trapeze # 38213



Grain # 38220





Elements # 38242

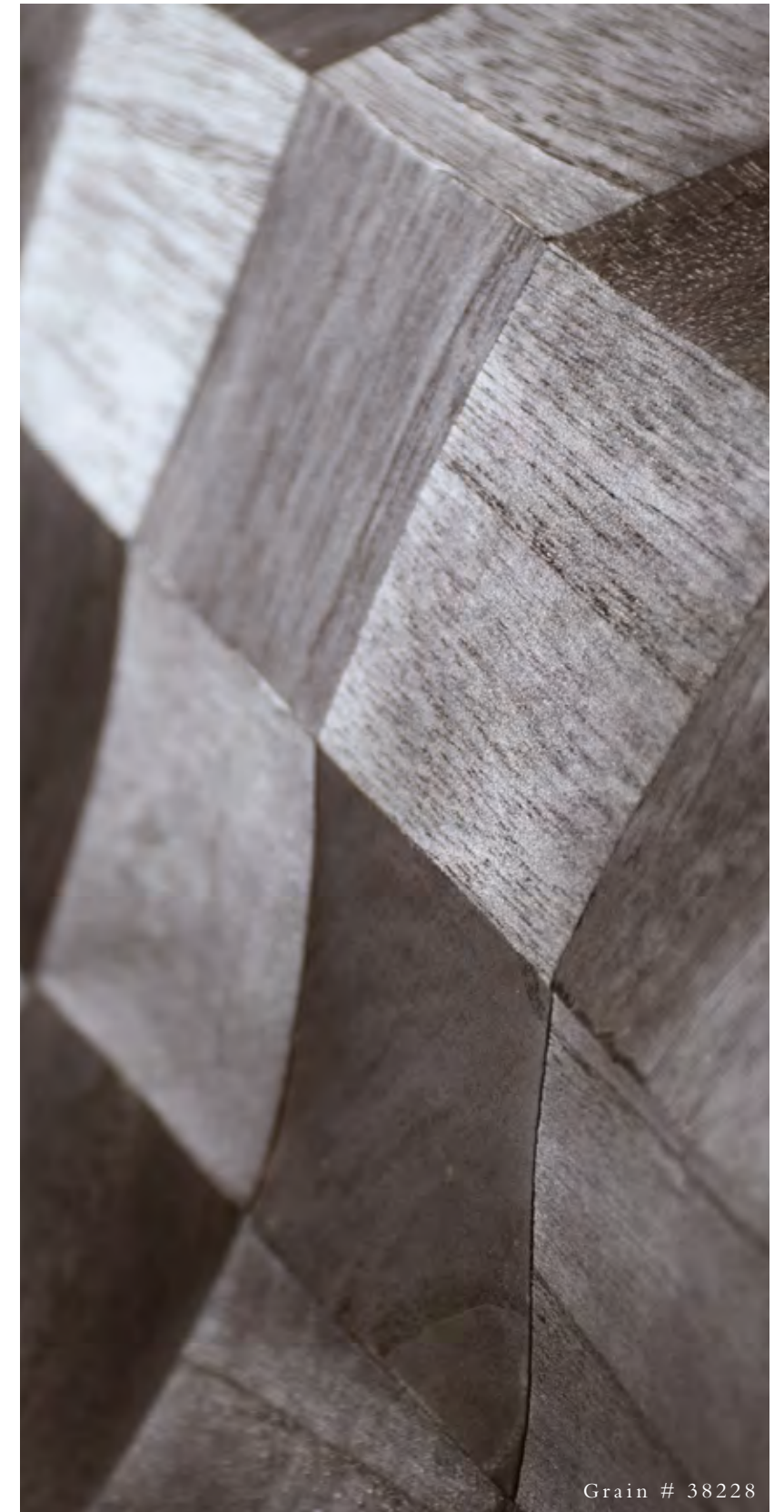


Formation # 38203





Timber



Grain # 38228



